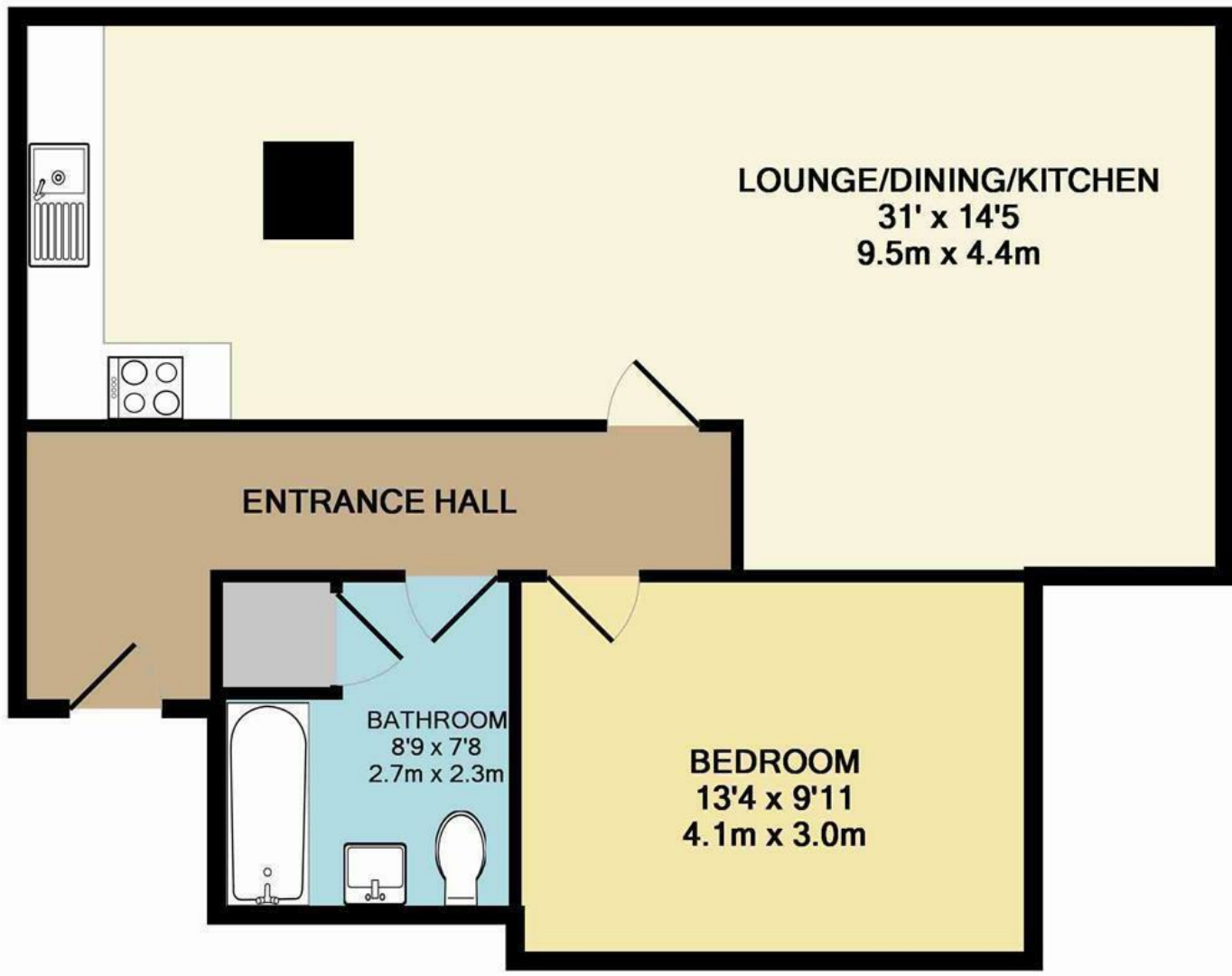


Energy Efficiency Rating		Current	Potential
Very energy efficient - lower running costs			
(92 plus) A			
(81-91) B			
(69-80) C		79	83
(55-68) D			
(39-54) E			
(21-38) F			
(1-20) G			
Not energy efficient - higher running costs			
England & Wales		EU Directive 2002/91/EC	

Disclaimer – In accordance with the Property Misdescriptions Act, the company gives notice that all descriptions, references to condition, necessary permissions for use and other details are given in good faith and believed to be correct, but any intending lessees do not rely on them as statements of fact, but must satisfy themselves by inspection or other means, as to their accuracy.



Whilst every attempt has been made to ensure the accuracy of the floor plan contained here, measurements of doors, windows, rooms and any other items are approximate and no responsibility is taken for any error, omission, or mis-statement. This plan is for illustrative purposes only and should be used as such by any prospective purchaser. The services, systems and appliances shown have not been tested and no guarantee as to their operability or efficiency can be given
 Made with Metropix ©2016



Paper Mill Yard | Norwich | NR1
 Guide Price £150,000



abbotFox presents this stylish City Centre apartment. Boasting open plan living accommodation and an allocated parking space, this home is situated in the popular Paper Mill Yard development. This fourth floor apartment offers accommodation featuring one double bedroom, bathroom, open plan kitchen and living area. The apartment is being sold with no onward chain and represents an ideal opportunity for any first time buyer or buy-to-let investor.

The centre of Norwich boasts two modern shopping malls, a bustling market place and boutique shopping in the numerous lanes and cobbled streets with the two magnificent cathedrals and dominant castle providing a wealth of history dating back to the Norman times. The property also benefits from being close to Norwich Train Station with its regular links to Cambridge and London.

